

Protocol of analysis

Applicant: Dragonfly Biosciences Bulgaria

Subject of the test: Determination of CBD content in the examples provided

Product name: Dragonfly CBD 500 mg (5,6%) N.S. Cannabidiol oil
Batch number: 0208

CANNABINOIDS %		
CBDA	CBD	CBN
-	6.3234 %	-
THCA and THC are not detectable		

Method of analysis in accordance with recommended practice of



High Performance Liquid Chromatography (HPLC) analysis carried out strictly following the "Recommended methods for the identification and analysis of cannabis and cannabis products" by United Nations Office on Drug and Crime.
Method used: HPLC, column LiChrospher 60 RP-select B, 250x4mm (5 µm); pre-column 4x4mm RP-select B (5 µm).

Chromatograms and other data

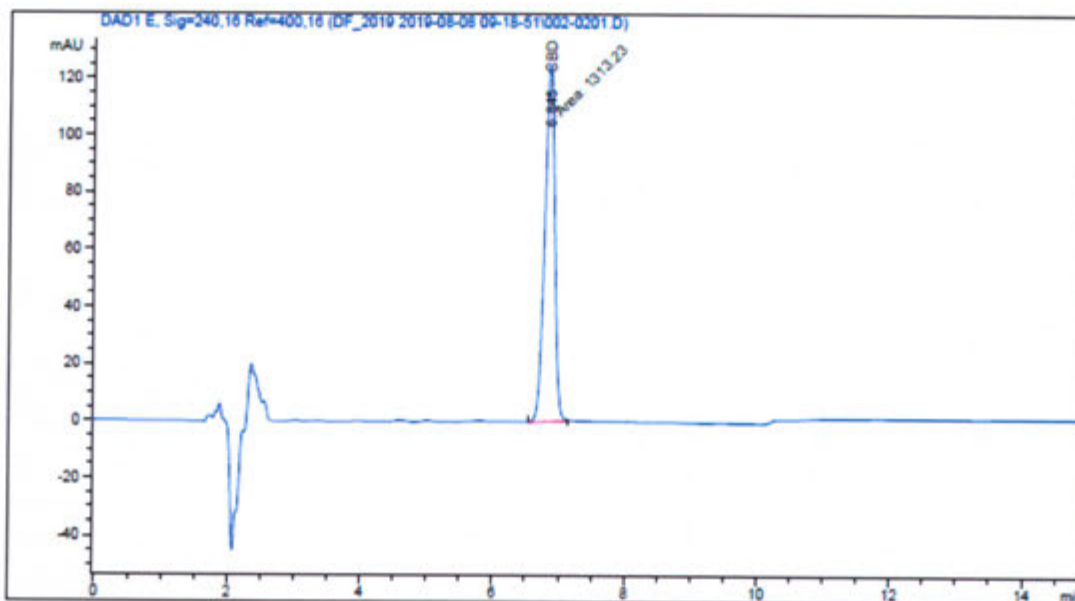
Data File C:\CHEM32\1\DATA\DF_2019 2019-08-08 09-18-51\002-0201.D
Sample Name: 0208

```

=====
Acq. Operator   : OSS                               Seq. Line :    2
Acq. Instrument : HPLC1                             Location  : Vial 2
Injection Date  : 08.8.2019 r. 09:55:28             Inj       :    1
                                                    Inj Volume: 20 µl

Acq. Method    : C:\CHEM32\1\DATA\DF_2019 2019-08-08 09-18-51\DF_2019.M
Last changed   : 15.7.2019 r. 16:01:32 by OSS
Analysis Method: C:\CHEM32\1\METHODS\DF_2019.M
Last changed   : 15.7.2019 r. 16:01:32 by OSS
Method Info    : This is a test method
=====

```



External Standard Report

```

=====
Sorted By      : Signal
Calib. Data Modified : 10.1.2019 r. 10:56:45
Multiplier:    : 1.0000
Dilution:      : 1.0000
Use Multiplier & Dilution Factor with ISTDs
=====

```

Signal 1: DAD1 E, Sig=240,16 Ref=400,16

RetTime [min]	Type	Area [mAU*s]	Amt/Area	Amount [mg/ml]	Grp	Name
6.000						CBDA
6.845	MM	1313.22803	6.33199e-5	8.31533e-2		CB
8.913						CBN

Totals : 8.31533e-2

Operator:

Mariana Kamenova-Nacheva

(Asst. Prof. Dr. Mariana Kamenova-Nacheva)

Responsible scientist:

Vladimir Dimitrov

(Prof. DSc. Vladimir Dimitrov)

Director of the Institute



Svetlana Simova
(Prof. DSc. Svetlana Simova)